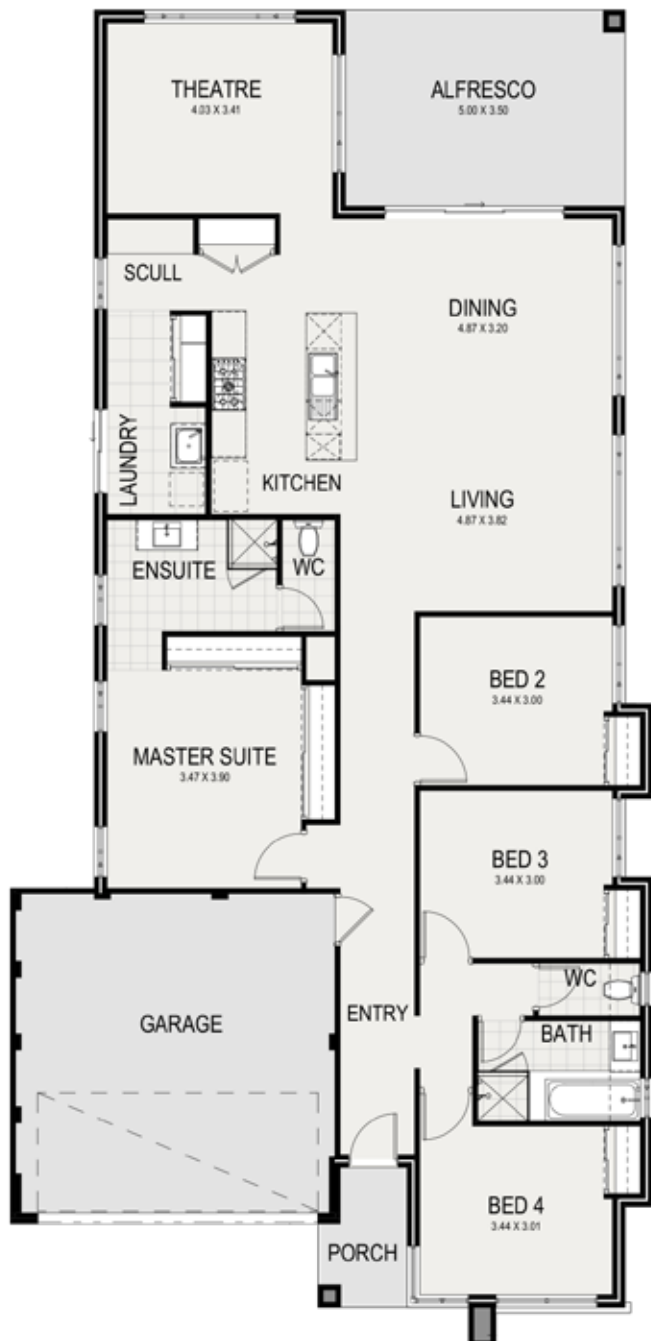




THE LONSDALE



The Lonsdale is a modern four bedroom, two bathroom design. As you enter the home, wander down the passage and feel the amazing entertainers' zone. The beautiful kitchen, with an island bench and scullery, overlooks the open-plan living and dining and flows onto the alfresco area. The private master suite makes for the perfect hideaway and comes complete with his and hers built-in robes and a generous ensuite. Nestled to the right of the home are three minor bedrooms with built-in robes and easy access to the second bathroom.

SIGNATURE SPECIFICATION

SUITS 12.5M LOTS

TOTAL AREA 226.71M²

4 2 2



New Choice

HOMES

Image for illustration purposes only

24 SANGIORGIO COURT, OSBORNE PARK WA 6017 | T to 08 9201 7878